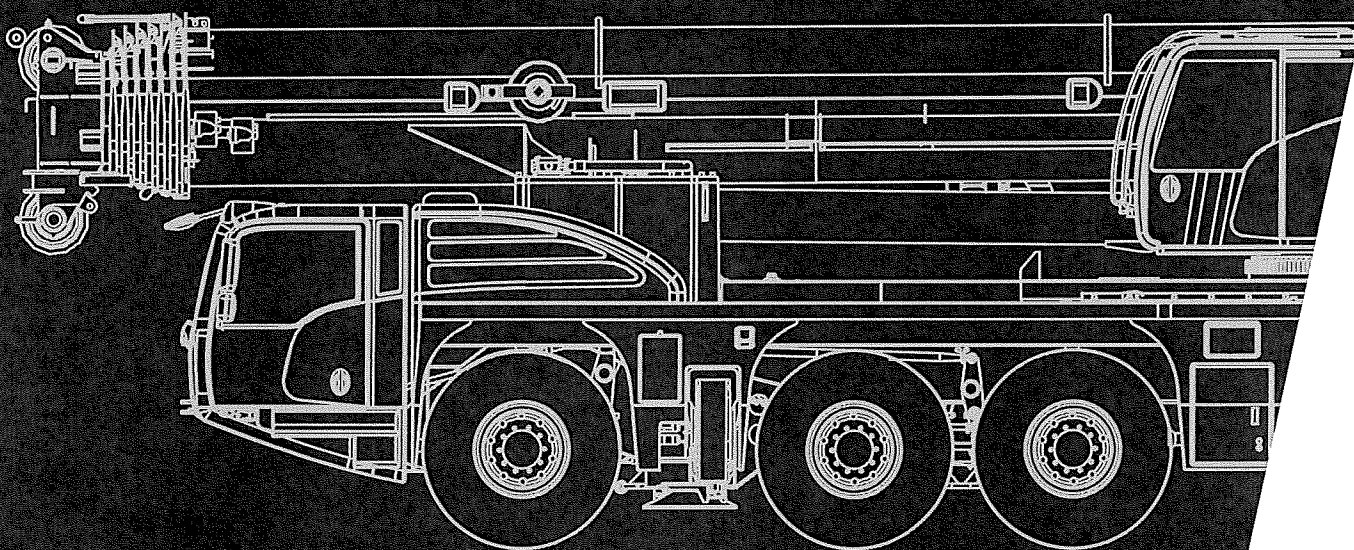
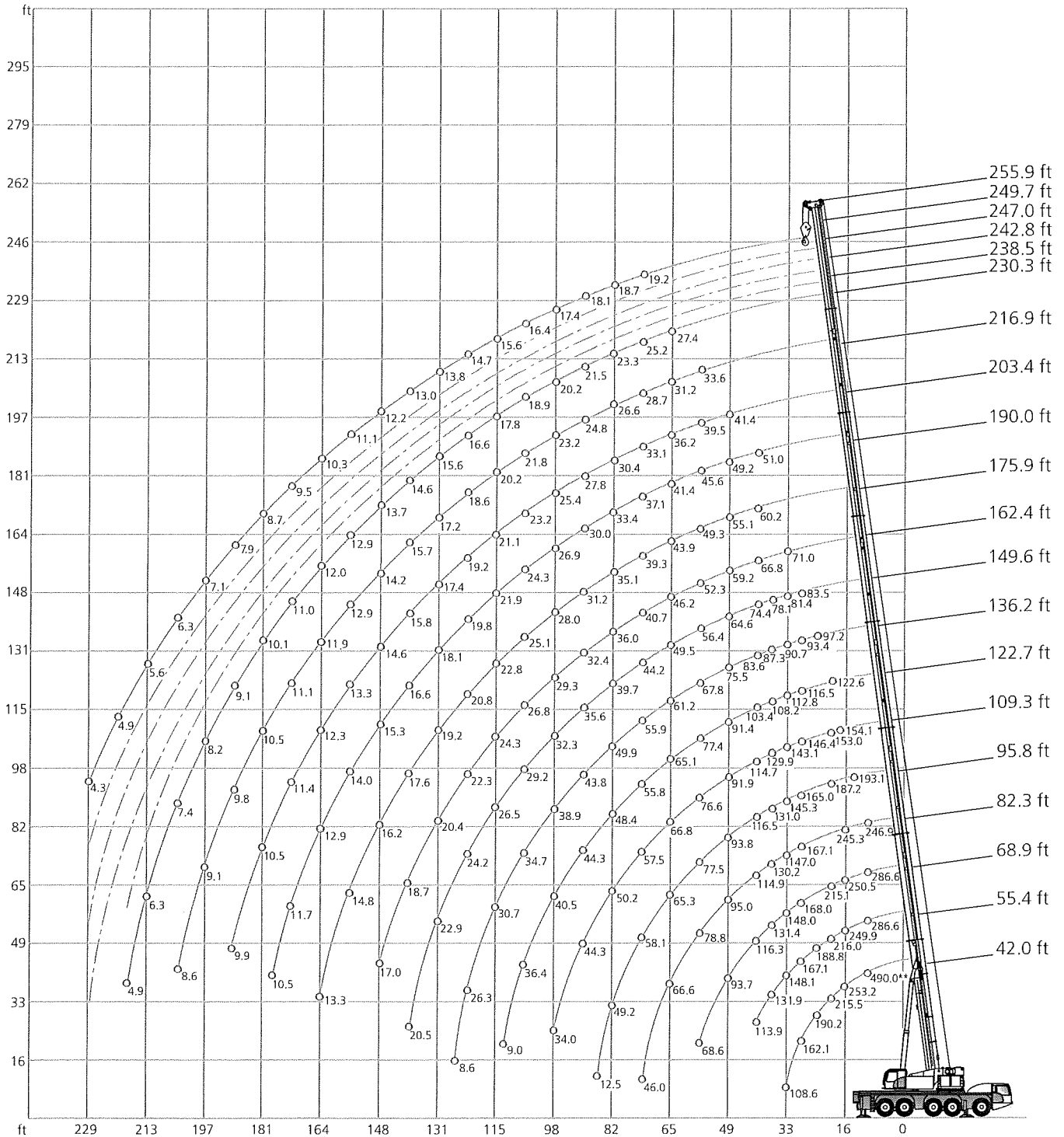
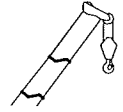


AC 220-5



**All Terrain Crane
245 USt Capacity class**



** Capacity class

154,800 lb		27.60 ft x 29.10 ft										360°					ASME B30.5					
		(ft)																				
		42.0*	42.0	55.4	68.9	82.3	95.8	109.3	122.7	136.2	149.6	162.4	175.9	190.0	203.4	216.9	230.3	238.5	242.8	247.0	249.7	255.9
ft		1,000 lb																				
8	490.0**	-	-	-	-	-	-	-	-	-	-	-	-	-	-	-	-	-	-	-	-	-
10	286.6	286.6	286.6	286.6	246.9	-	-	-	-	-	-	-	-	-	-	-	-	-	-	-	-	-
12	285.2	285.2	284.9	285.6	246.9	-	-	-	-	-	-	-	-	-	-	-	-	-	-	-	-	-
14	273.4	272.8	270.6	272.7	246.9	193.1	-	-	-	-	-	-	-	-	-	-	-	-	-	-	-	-
16	253.2	251.3	249.9	250.2	245.3	189.6	-	-	-	-	-	-	-	-	-	-	-	-	-	-	-	-
18	233.8	232.7	232.4	232.0	231.9	188.1	154.1	-	-	-	-	-	-	-	-	-	-	-	-	-	-	-
20	215.5	215.4	216.0	215.1	216.0	187.2	153.0	122.6	-	-	-	-	-	-	-	-	-	-	-	-	-	-
24	190.2	188.6	188.8	189.6	188.8	179.9	149.7	119.6	97.2	-	-	-	-	-	-	-	-	-	-	-	-	-
28	162.1	161.4	167.1	168.0	167.1	165.0	146.4	116.5	93.4	83.5	-	-	-	-	-	-	-	-	-	-	-	-
32	108.6	108.6	148.1	148.0	147.0	145.3	143.1	112.8	90.7	81.4	71.0	-	-	-	-	-	-	-	-	-	-	-
36	-	-	131.9	131.4	130.2	131.0	129.9	108.2	87.3	78.1	69.2	-	-	-	-	-	-	-	-	-	-	-
40	-	-	113.9	116.3	114.9	116.5	114.7	103.4	83.6	74.4	66.8	60.2	51.0	-	-	-	-	-	-	-	-	-
48	-	-	-	93.7	95.0	93.8	91.9	91.4	75.5	64.6	59.2	55.1	49.2	41.4	-	-	-	-	-	-	-	-
56	-	-	-	68.6	78.8	77.5	76.6	77.4	67.8	56.4	52.3	49.3	45.6	39.5	33.6	-	-	-	-	-	-	-
64	-	-	-	-	66.6	65.3	66.8	65.1	61.2	49.5	46.2	43.9	41.4	36.2	31.2	27.4	26.6	25.0	22.8	21.2	-	-
72	-	-	-	-	46.0	58.1	57.5	55.8	55.9	44.2	40.7	39.3	37.1	33.1	28.7	25.2	25.2	24.5	22.1	20.7	19.2	-
80	-	-	-	-	-	49.2	50.2	48.4	49.9	39.7	36.0	35.1	33.4	30.4	26.6	23.3	23.3	23.3	21.4	20.2	18.7	-
88	-	-	-	-	-	-	12.5	44.3	44.3	43.8	35.6	32.4	31.2	30.0	27.8	24.8	21.5	21.7	21.7	20.4	19.5	18.1
96	-	-	-	-	-	-	-	34.0	40.5	38.9	32.3	29.3	28.0	26.9	25.4	23.2	20.2	20.2	20.2	19.3	18.5	17.4
104	-	-	-	-	-	-	-	12.0	36.4	34.7	29.2	26.8	25.1	24.3	23.2	21.8	18.9	18.9	19.1	18.0	17.5	16.4
112	-	-	-	-	-	-	-	-	9.0	30.7	26.5	24.3	22.8	21.9	21.1	20.2	17.8	17.8	17.6	16.9	16.5	15.6
120	-	-	-	-	-	-	-	-	-	26.3	24.2	22.3	20.8	19.8	19.2	18.6	16.6	16.4	16.2	15.6	15.4	14.7
128	-	-	-	-	-	-	-	-	-	8.6	22.9	20.4	19.2	18.1	17.4	17.2	15.6	15.2	14.9	14.5	14.3	13.8
136	-	-	-	-	-	-	-	-	-	-	20.5	18.7	17.6	16.6	15.8	15.7	14.6	14.1	13.7	13.5	13.2	13.0
144	-	-	-	-	-	-	-	-	-	-	-	17.0	16.2	15.3	14.6	14.2	13.7	13.1	12.4	12.4	12.2	12.2
152	-	-	-	-	-	-	-	-	-	-	-	-	14.8	14.0	13.3	12.9	12.9	12.0	11.5	11.3	11.3	11.1
160	-	-	-	-	-	-	-	-	-	-	-	-	-	13.3	12.9	12.3	11.9	12.0	10.9	10.5	10.3	10.3
168	-	-	-	-	-	-	-	-	-	-	-	-	-	-	11.7	11.4	11.1	11.0	9.9	9.7	9.5	9.5
176	-	-	-	-	-	-	-	-	-	-	-	-	-	-	-	10.5	10.5	10.5	10.1	9.0	8.7	8.5
184	-	-	-	-	-	-	-	-	-	-	-	-	-	-	-	-	9.9	9.8	9.1	8.0	7.9	7.7
192	-	-	-	-	-	-	-	-	-	-	-	-	-	-	-	-	-	9.1	8.2	7.1	7.1	6.9
200	-	-	-	-	-	-	-	-	-	-	-	-	-	-	-	-	-	8.6	7.4	6.5	6.3	6.2
208	-	-	-	-	-	-	-	-	-	-	-	-	-	-	-	-	-	-	6.3	5.8	5.6	5.6
216	-	-	-	-	-	-	-	-	-	-	-	-	-	-	-	-	-	-	4.9	5.1	4.9	4.9
224	-	-	-	-	-	-	-	-	-	-	-	-	-	-	-	-	-	-	-	3.5	4.3	4.3
1)	45.9	45.9	33.7	26.5	20.9	16.5	13.7	10.6	8.6	6.6	5.3	3.3	-	-	-	-	-	-	-	-	-	-

1) Capacities with horizontal boom

* over rear

** Capacity class