

**KOBELCO**

Hydraulic Crawler Crane

# **CK1600G-2**

Max. Lifting Capacity : 160 US Tons  
Max. Crane Boom Length : 250 ft  
Max. Fixed Jib Combination : 200 ft + 100 ft

Max. Lifting Capacity - Luffing: 79,000 lbs  
Max. Crane Boom Length : 157 ft  
Max. Luffing Jib Length : 175 ft

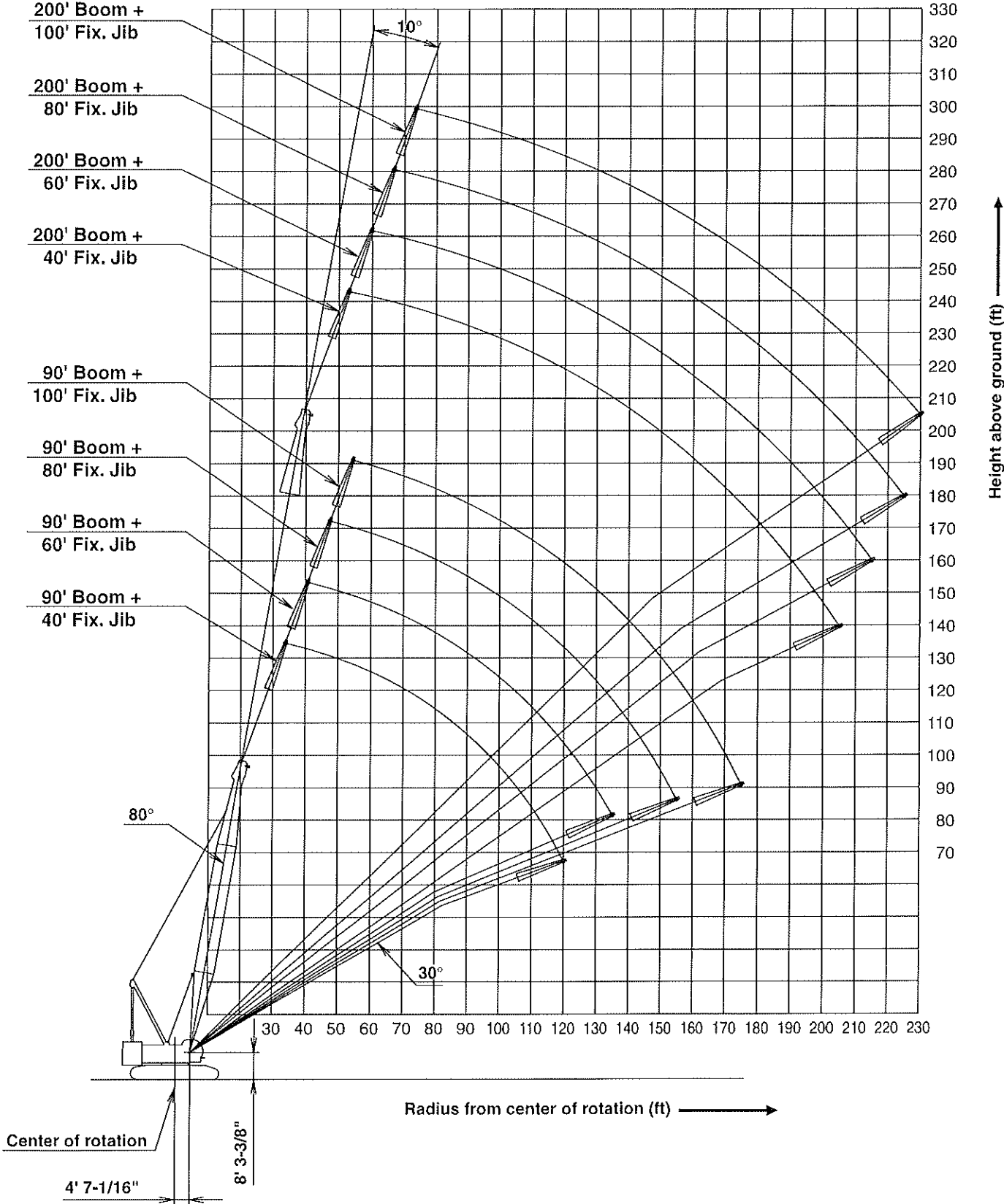


# CK1600G-2 SPECIFICATIONS

## Working Ranges

Fixed Jib 10° (with additional counterweight)

Unit : ft (m)



# CK1600G-2 SPECIFICATIONS

## Fixed Jib Lift Capacity

Full Counterweight: 121,300 lbs    Carbody Weight: 23,810

170' Boom																	
Load Radius (ft)	40 ft Jib				60 ft Jib				80 ft Jib				100 ft Jib				Load Radius (ft)
	Offset Angle (deg.)				Offset Angle (deg.)				Offset Angle (deg.)				Offset Angle (deg.)				
	10		30		10		30		10		30		10		30		
	Boom Angle (deg)	Rated Load (lbs)	Boom Angle (deg)	Rated Load (lbs)	Boom Angle (deg)	Rated Load (lbs)	Boom Angle (deg)	Rated Load (lbs)	Boom Angle (deg)	Rated Load (lbs)	Boom Angle (deg)	Rated Load (lbs)	Boom Angle (deg)	Rated Load (lbs)	Boom Angle (deg)	Rated Load (lbs)	
48	79.6	59,000*														48	
50	79.1	59,000*														50	
55	77.7	59,000*														55	
60	76.3	55,100														60	
65	74.9	49,300														65	
70	73.4	44,400														70	
75	72.0	40,300														75	
80	70.6	36,800														80	
85	69.1	33,700														85	
90	67.6	31,000														90	
95	66.1	28,700														95	
100	64.6	26,500														100	
105	63.1	24,700														105	
110	61.5	23,000														110	
115	59.9	21,400														115	
120	58.3	20,000														120	
125	56.7	18,800														125	
130	55.0	17,600														130	
135	53.3	16,500														135	
140	51.6	15,500														140	
145	49.8	14,600														145	
150	47.9	13,800														150	
155	46.0	13,000														155	
160	44.0	12,200*														160	
165	42.0	11,200*														165	
170	39.8	10,300*														170	
175	37.6	9,400*														175	
180	35.2	8,500*														180	
185	32.7	7,700*														185	
190	30.0	6,800*														190	
195																195	
200																200	
205																205	
210																210	
215																215	
220																220	
225																225	
230																230	
235																235	
240																240	
Reeves	2		2		2		1		1		1		1		1	Reeves	

180' Boom																	
Load Radius (ft)	40 ft Jib				60 ft Jib				80 ft Jib				100 ft Jib				Load Radius (ft)
	Offset Angle (deg.)				Offset Angle (deg.)				Offset Angle (deg.)				Offset Angle (deg.)				
	10		30		10		30		10		30		10		30		
	Boom Angle (deg)	Rated Load (lbs)	Boom Angle (deg)	Rated Load (lbs)	Boom Angle (deg)	Rated Load (lbs)	Boom Angle (deg)	Rated Load (lbs)	Boom Angle (deg)	Rated Load (lbs)	Boom Angle (deg)	Rated Load (lbs)	Boom Angle (deg)	Rated Load (lbs)	Boom Angle (deg)	Rated Load (lbs)	
50	79.6	59,000*														50	
55	78.3	59,000*														55	
60	76.9	54,700														60	
65	75.6	48,800														65	
70	74.2	44,000														70	
75	72.9	39,900														75	
80	71.5	36,300														80	
85	70.1	33,300														85	
90	68.7	30,600														90	
95	67.3	28,200														95	
100	65.9	26,100														100	
105	64.4	24,200														105	
110	62.9	22,500														110	
115	61.5	21,000														115	
120	59.9	19,600														120	
125	58.4	18,300														125	
130	56.8	17,100														130	
135	55.3	16,000														135	
140	53.6	15,100														140	
145	52.0	14,100														145	
150	50.3	13,300														150	
155	48.5	12,500														155	
160	46.7	11,600*														160	
165	44.9	10,800*														165	
170	42.9	9,900*														170	
175	40.9	9,100*														175	
180	38.9	8,200*														180	
185	36.7	7,400*														185	
190	34.4	6,700*														190	
195	31.9	5,900*														195	
200																200	
205																205	
210																210	
215																215	
220																220	
225																225	
230																230	
235																235	
240																240	
Reeves	2		2		2		1		1		1		1		1	Reeves	

Note: Designed and rated to comply with ANSI Code B30.5

Capacities based on factors other than machine stability such as structural competence are shown by asterisk \* in the charts.

Refer to notes on page 21.