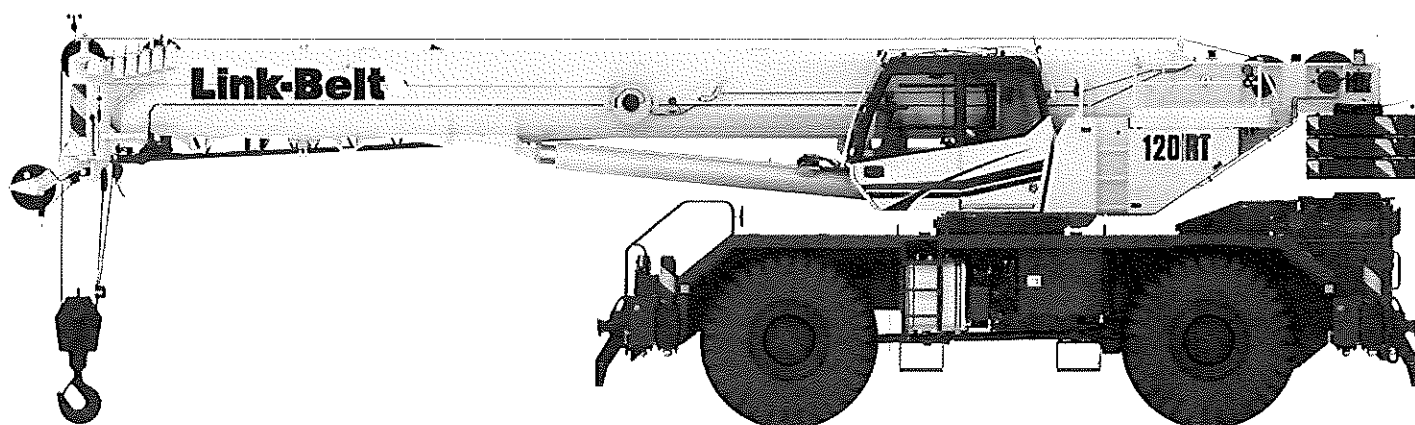


Technical Data

Specifications & Capacities

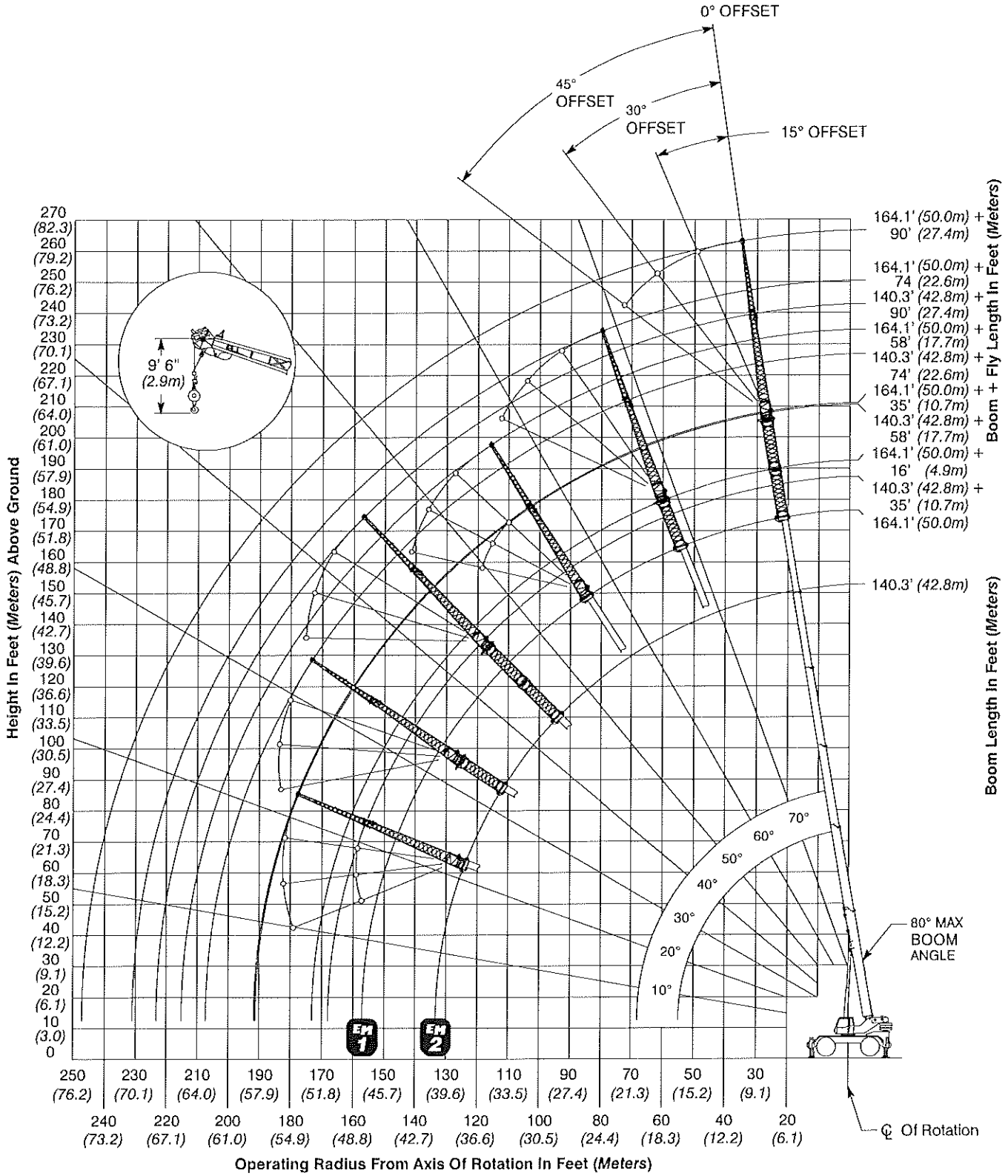
120|RT

Telescopic Boom Rough Terrain Crane
120 US ton
110 metric ton



CAUTION: This material is supplied for reference use only. Operator must refer to in- cab Crane Rating Manual and Operator's Manual to determine allowable crane lifting capacities and assembly and operating procedures.

Working Range Diagram Main Boom + Fly



Main Boom Lift Capacity Charts - Imperial

28,800 lb Counterweight - Fully Extended Outriggers - 360° Rotation (All Capacities Are Listed In Pounds)												
Radius (ft)	Boom Length (ft)											Radius (ft)
	38.3	50-50.5	61.7-63	74.7-76.1	86-89.5	100	111.2-114.6	125	137.2-140.3	150	164.1	
7	240,000**											7
8	200,000*											8
10	187,400*											10
10	163,100	160,500	137,600									10
12	146,000	147,100	137,600	120,400								12
15	125,700	127,400	124,800	120,400	91,800							15
20	92,200	95,000	95,800	95,600	91,800	66,100	50,600					20
25	71,300	74,200	75,100	75,000	74,100	66,100	50,600	38,900	25,500			25
30	57,100	60,100	61,100	61,900	62,300	61,400	50,600	38,900	31,000	22,600		30
35		49,800	51,900	52,400	52,100	51,300	46,300	38,900	31,000	22,600	19,700	35
40		42,700	44,300	44,700	44,500	43,700	41,800	38,200	31,000	22,600	19,700	40
45			37,100	37,500	37,100	36,100	35,200	35,200	31,000	22,600	19,700	45
50			31,000	31,500	31,100	31,400	30,500	30,300	29,500	22,600	19,700	50
55			26,300	26,800	27,000	26,700	26,400	25,700	25,000	22,600	19,700	55
60				23,100	23,300	23,000	22,700	22,600	22,900	22,600	19,700	60
65				20,300	20,300	20,000	19,700	21,100	20,800	20,100	19,500	65
70					17,800	18,000	18,100	18,600	18,300	17,600	17,000	70
75					15,800	16,900	16,900	16,500	16,200	15,700	15,100	75
80					14,000	15,300	15,300	14,900	14,500	13,900	13,300	80
85						13,700	13,800	13,300	13,000	12,400	11,800	85
90						12,300	12,400	12,000	11,700	11,000	10,400	90
95							11,200	10,800	10,500	9,900	9,300	95
100							10,100	9,700	9,400	8,800	8,200	100
105							7,400	8,800	8,500	7,900	7,300	105
110								7,900	7,700	7,100	6,500	110
115								7,200	6,900	6,300	5,700	115
120									6,200	5,600	5,100	120
125									5,600	5,000	4,400	125
130									5,000	4,400	3,900	130
135										3,900	3,400	135
140										3,400	2,900	140
145											2,400	145
150											2,000	150
155											1,700	155

* Over Front Only With Special Reeving And/Or Special Equipment
 ** Over Front Only With Special Reeving And/Or Special Equipment On Intermediate Outriggers

This information is not for crane operation. Operator must refer to the in- cab information for crane operation. Rated lifting capacities shown on fully extended outriggers do not exceed 85% of the tipping loads and on tires do not exceed 75% of the tipping loads.