

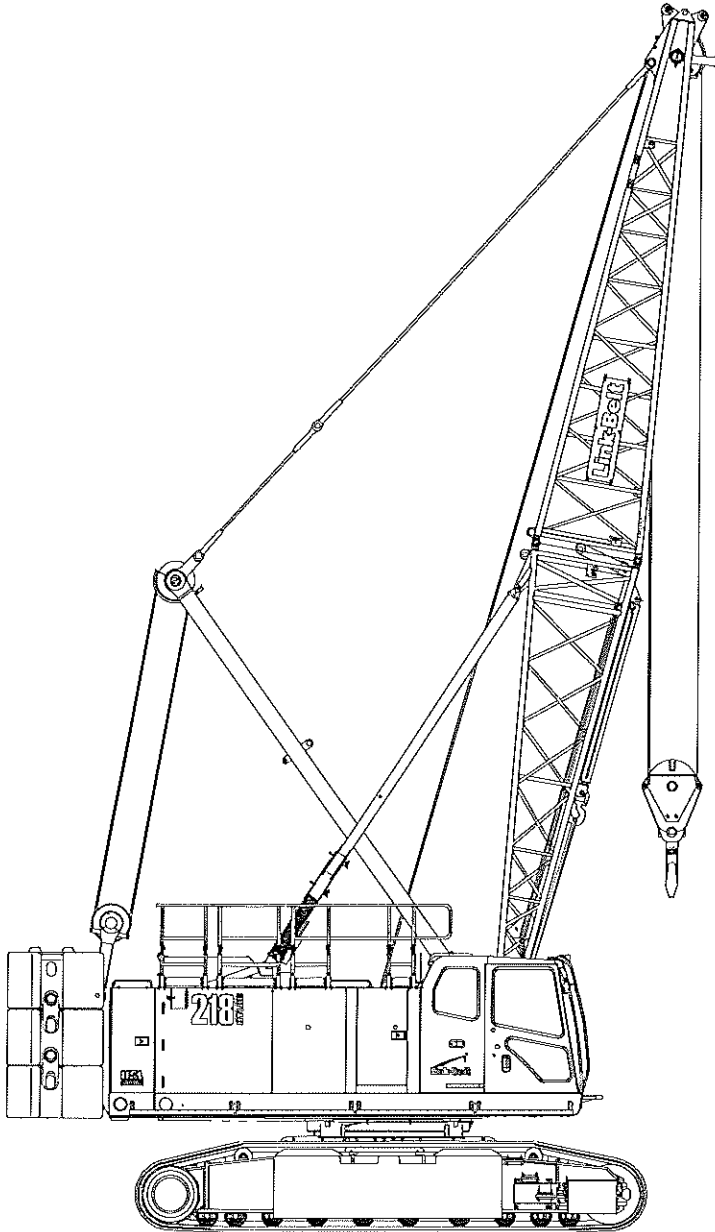
# Technical Data

## Specifications & Capacities

# 218

## HSL Crawler Crane

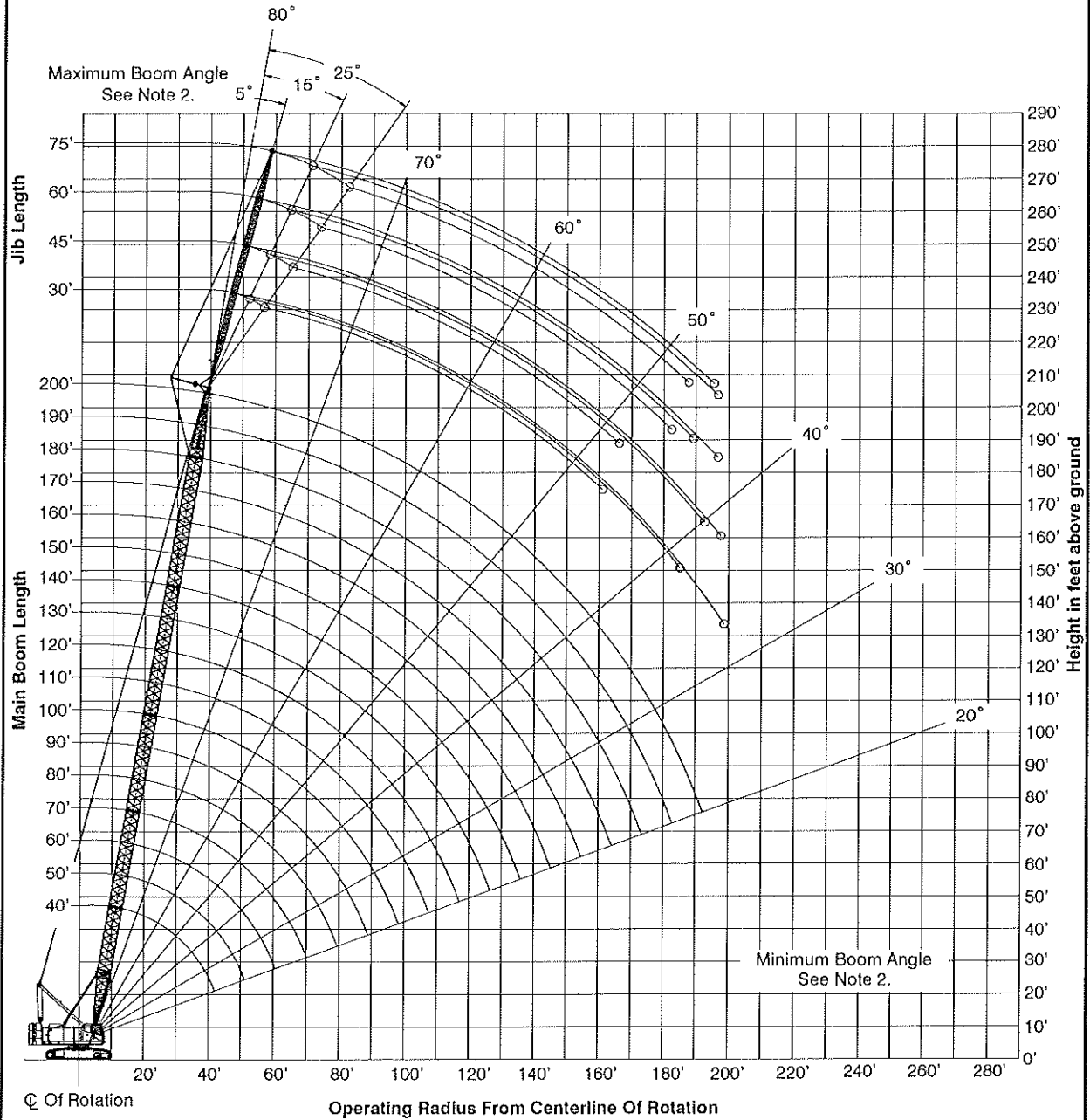
110 Ton (100 metric ton)



CAUTION: This material is supplied for reference use only. Operator must refer to in-cab Crane Rating Manual and Operator's Manual to determine allowable crane lifting capacities and assembly and operating procedures.

# Working Range Diagram

40' To 200' Main Boom With 30' - 75' Jib



**Notes:**

1. Boom geometry shown is for unloaded condition and crane standing level on firm supporting surface. Boom deflection, subsequent radius, and boom angle change must be accounted for when applying load to hook.
2. Maximum and minimum boom angles are equal to the values listed in the capacity chart for each boom length.

**218 HSL 50" x 60" Tube Boom and 24" x 32" Tube Jib Capacities With ABC+A Counterweight**  
**Refer to "Tubular Jib Notes" in this Crane Rating Manual before operating the crane.**

Boom Length (ft)	Jib Length (ft)	Load Radius (ft)	Boom Angle (deg)	Tip Height (ft)	5 Degree Offset		Boom Angle (deg)	Tip Height (ft)	15 Degree Offset		Boom Angle (deg)	Tip Height (ft)	25 Degree Offset		Load Radius (ft)
					End-Blk (lbs)	360 Deg (lbs)			End-Blk (lbs)	360 Deg (lbs)			End-Blk (lbs)	360 Deg (lbs)	
130	75	46.62	80.0	209.6	17,900	17,900									46.62
130	75	50	79.0	208.9	17,600	17,600									50
130	75	60	76.2	206.4	16,700	16,700	79.7	204.8	10,900	10,900					60
130	75	70	73.3	203.3	14,200	14,200	76.8	201.8	9,700	9,700					70
130	75	80	70.3	199.6	12,400	12,400	73.8	198.1	8,700	8,700	77.0	195.0	6,200	6,200	80
130	75	90	67.3	195.4	11,000	11,000	70.7	193.8	7,900	7,900	74.0	190.6	5,700	5,700	90
130	75	100	64.2	190.5	9,800	9,800	67.6	188.9	7,200	7,200	70.8	185.6	5,300	5,300	100
130	75	110	61.0	184.9	8,800	8,800	64.4	183.2	6,600	6,600	67.5	179.9	4,900	4,900	110
130	75	120	57.8	178.6	8,000	8,100	61.1	176.8	6,100	6,100	64.1	173.3	4,600	4,600	120
130	75	130	54.3	171.4	7,400	7,400	57.6	169.5	5,700	5,700	60.6	165.9	4,400	4,400	130
130	75	140	50.8	163.2	6,800	6,800	54.0	161.3	5,300	5,300	56.9	157.4	4,100	4,100	140
130	75	150	47.0	153.9	6,300	6,300	50.2	151.8	5,000	5,000	52.9	147.7	3,900	3,900	150
130	75	160	42.9	143.2	5,900	5,900	46.1	141.0	4,700	4,700	48.7	136.5	3,800	3,800	160
130	75	170	38.5	130.8	5,500	5,500	41.6	128.4	4,500	4,500					170
130	75	180	33.6	116.1	5,200	5,200	36.5	113.3	4,300	4,300					180
130	75	190	27.8	98.0	4,900	4,900									190
140	30	36.71	80.0	176.0	24,000	24,000									36.71
140	30	40	78.9	175.3	24,000	24,000									40
140	30	50	75.4	172.9	24,000	24,000	77.1	172.1	24,000	24,000	78.7	170.6	20,300	20,300	50
140	30	60	72.0	169.8	24,000	24,000	73.6	169.0	24,000	24,000	75.1	167.4	18,800	18,800	60
140	30	70	68.4	166.0	24,000	22,600	70.0	165.2	24,000	22,900	71.5	163.6	17,500	17,500	70
140	30	80	64.7	161.5	22,400	18,800	66.3	160.7	22,700	19,100	67.8	159.0	16,500	16,500	80
140	30	90	60.9	156.2	19,100	16,000	62.5	155.3	19,300	16,200	63.9	153.6	15,600	15,600	90
140	30	100	57.0	150.0	16,400	13,700	58.6	149.1	16,600	13,900	59.9	147.2	14,800	14,000	100
140	30	110	52.9	142.7	14,300	11,900	54.4	141.8	14,500	12,000	55.7	139.9	14,100	12,200	110
140	30	120	48.5	134.3	12,600	10,400	50.0	133.2	12,700	10,500	51.2	131.2	12,800	10,600	120
140	30	130	43.8	124.4	11,100	9,100	45.3	123.3	11,200	9,200	46.4	121.1	11,300	9,300	130
140	30	140	38.7	112.6	9,700	8,100	40.1	111.4	9,800	8,200					140
140	30	150	32.8	98.2	8,600	7,200									150
140	30	160	25.8	79.8	7,600	6,400									160
140	45	40.59	80.0	190.5	24,000	24,000									40.59
140	45	50	77.0	188.4	24,000	24,000	79.4	187.3	22,100	22,100					50
140	45	60	73.8	185.6	24,000	24,000	76.1	184.5	19,400	19,400	78.3	182.3	13,400	13,400	60
140	45	70	70.6	182.1	24,000	22,800	72.9	181.0	17,300	17,300	75.0	178.8	12,300	12,300	70
140	45	80	67.3	178.0	22,100	19,000	69.5	176.9	15,600	15,600	71.6	174.6	11,300	11,300	80
140	45	90	63.9	173.2	19,200	16,100	66.1	172.1	14,200	14,200	68.1	169.7	10,600	10,600	90
140	45	100	60.4	167.7	16,600	13,900	62.6	166.5	13,100	13,100	64.5	164.0	9,900	9,900	100
140	45	110	56.7	161.3	14,500	12,000	58.9	160.0	12,100	12,100	60.8	157.5	9,300	9,400	110
140	45	120	52.9	153.9	12,700	10,500	55.0	152.6	11,300	10,700	56.9	149.9	8,900	8,900	120
140	45	130	48.9	145.4	11,300	9,300	51.0	144.0	10,600	9,500	52.7	141.2	8,500	8,500	130
140	45	140	44.6	135.6	9,900	8,200	46.6	134.1	10,000	8,400	48.3	131.0	8,100	8,100	140
140	45	150	39.9	124.1	8,800	7,300	41.9	122.4	8,900	7,400					150
140	45	160	34.7	110.4	7,700	6,500	36.6	108.5	7,900	6,600					160
140	45	170	28.6	93.4	6,900	5,800									170