

248 HYLAB HSL SERIES

200 ton | 181.4 mt Lattice Boom Crawler Crane

Heavy-duty power for the most demanding jobs

- Transport crane with 25 ft base section complete with self assembly sheaves, less sideframes and counterweight at 88,305 lbs (40 055 kg)
- 11-piece counterweight system design with state-of-the-art removal system
- HSL rated capacity limiter with color graphics
- Power-up/down with auto brake
- Superior capacities

Rope guards and polyamide sheaves

Self-assembly sheave in base section

Sealed bearings in mast and ball

Spring-loaded backstops

Foldable upper guardrails

Remote-control operated hydraulic counterweight removal cylinders

Telematics

Full contact 44° (1.12π) track shoes designed for maximum contact area minimizes ground bearing pressure

Counterweight "biscuit" design allows for various configuration options and easy transport

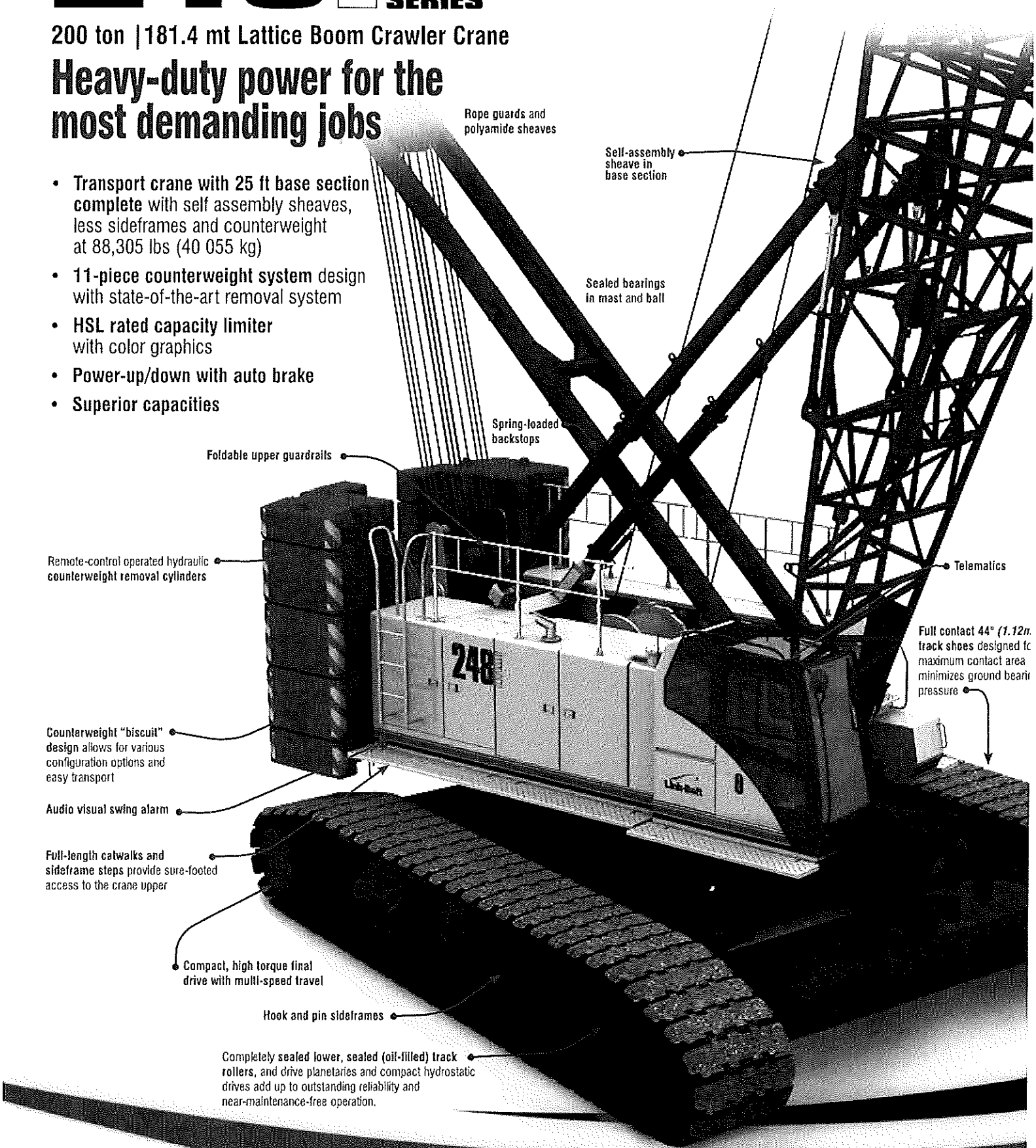
Audio visual swing alarm

Full-length catwalks and sideframe steps provide sure-footed access to the crane upper

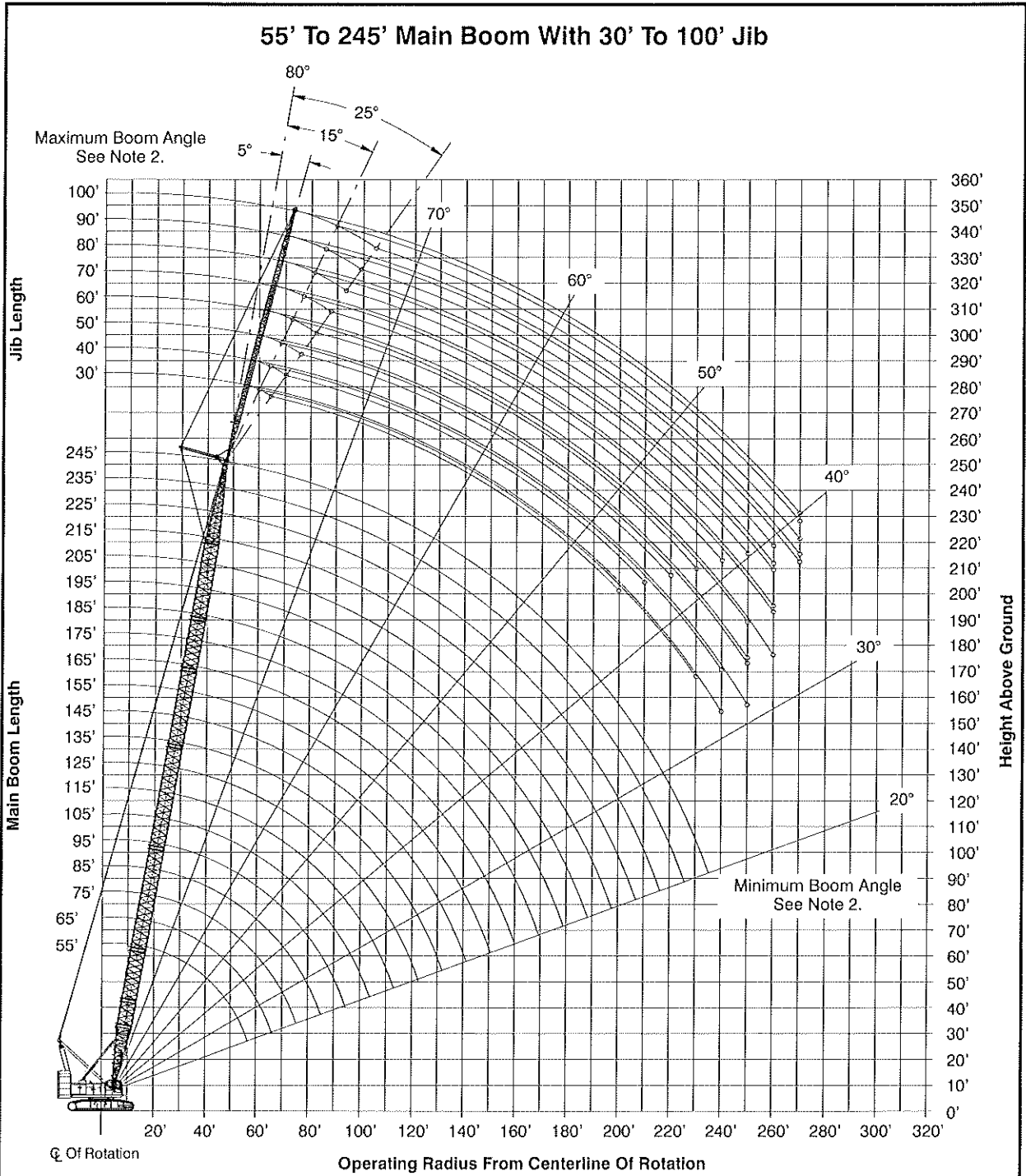
Compact, high torque final drive with multi-speed travel

Hook and pin sideframes

Completely sealed lower, sealed (oil-filled) track rollers, and drive planetaries and compact hydrostatic drives add up to outstanding reliability and near-maintenance-free operation.



Working Range Diagram



Notes:

1. Boom geometry shown is for unloaded condition and crane standing level on firm supporting surface. Boom deflection, subsequent radius, and boom angle change must be accounted for when applying load to hook.
2. Maximum and minimum boom angles are equal to the values listed in the capacity chart for each boom length.

Capacities - 248 HSL - w/ 68" x 80" Tubular Boom, w/ 24" x 32" Tubular Jib, w/ ABCDE+A CTWT												
Refer to the "Tubular Jib Notes for ABCDE+A Counterweight" in this Crane Rating Manual before operating the crane.												
Boom Length (ft)	Jib Length (ft)	Jib Load Radius (ft)	Jib Angle to Boom Offset									Jib Load Radius (ft)
			5 Degrees			15 Degrees			25 Degrees			
			Boom Angle (deg)	Jib Point Height (ft)	360° Jib Capacity (lb)	Boom Angle (deg)	Jib Point Height (ft)	360° Jib Capacity (lb)	Boom Angle (deg)	Jib Point Height (ft)	360° Jib Capacity (lb)	
165	100	59.41	80.0	269.6	11,900							59.41
165	100	60	79.9	269.5	11,800							60
165	100	70	77.7	267.1	11,200							70
165	100	80	75.4	264.4	10,600	79.1	262.4	9,200				80
165	100	90	73.2	261.2	10,100	76.8	259.2	8,700				90
165	100	100	70.9	257.6	9,600	74.5	255.6	8,300	77.9	251.5	7,200	100
165	100	110	68.6	253.6	9,100	72.2	251.5	7,900	75.5	247.4	6,900	110
165	100	120	66.2	249.0	8,600	69.8	246.9	7,500	73.1	242.7	6,600	120
165	100	130	63.8	244.0	8,200	67.4	241.8	7,200	70.6	237.5	6,300	130
165	100	140	61.4	238.4	7,800	64.9	236.2	6,900	68.1	231.7	6,100	140
165	100	150	58.9	232.2	7,400	62.3	229.9	6,600	65.5	225.4	5,800	150
165	100	160	56.3	225.4	7,100	59.7	223.0	6,300	62.8	218.3	5,600	160
165	100	170	53.6	217.8	6,700	57.0	215.4	6,000	60.0	210.5	5,400	170
165	100	180	50.8	209.5	6,400	54.2	207.0	5,800	57.1	201.9	5,200	180
165	100	190	47.9	200.4	6,100	51.2	197.7	5,500	54.1	192.4	5,100	190
165	100	200	44.8	190.2	5,900	48.1	187.4	5,300	50.9	181.7	4,900	200
165	100	210	41.6	178.8	5,600	44.8	175.8	5,200	47.5	169.8	4,800	210
165	100	220	38.1	166.0	5,400	41.3	162.8	5,000				220
165	100	230	34.3	151.4	5,200	37.4	147.8	4,900				230
165	100	240	30.0	134.2	5,000							240
165	100	250	25.1	113.4	4,900							250
175	30	60	75.2	207.9	55,100	76.6	207.1	52,200	77.8	205.5	44,100	60
175	30	70	72.3	204.8	54,000	73.7	204.0	51,300	74.9	202.4	41,100	70
175	30	80	69.4	201.2	45,000	70.7	200.4	45,600	71.9	198.7	38,500	80
175	30	90	66.4	197.0	38,200	67.7	196.1	38,600	68.9	194.4	36,400	90
175	30	100	63.3	192.1	32,800	64.6	191.2	33,200	65.8	189.5	33,600	100
175	30	110	60.1	186.6	28,400	61.4	185.7	28,900	62.6	183.9	29,200	110
175	30	120	56.9	180.3	25,300	58.1	179.3	25,600	59.2	177.5	25,900	120
175	30	130	53.5	173.1	22,400	54.7	172.1	22,700	55.8	170.2	22,900	130
175	30	140	49.9	165.0	19,900	51.1	164.0	20,200	52.2	161.9	20,300	140
175	30	150	46.1	155.8	17,800	47.4	154.7	18,000	48.3	152.5	18,200	150
175	30	160	42.1	145.2	16,000	43.3	144.0	16,100				160
175	30	170	37.7	132.9	14,400	38.9	131.6	14,500				170
175	30	180	32.9	118.4	12,900							180
175	30	190	27.2	100.6	11,500							190
175	40	45.62	80.0	221.5	45,700							45.62
175	40	50	78.8	220.6	45,200							50
175	40	60	76.1	218.2	44,000	77.9	217.2	41,300	79.5	215.1	34,300	60
175	40	70	73.4	215.3	43,000	75.1	214.3	40,400	76.7	212.2	32,000	70
175	40	80	70.6	211.9	42,000	72.3	210.8	39,700	73.9	208.7	30,000	80
175	40	90	67.7	207.9	38,500	69.4	206.8	36,700	71.0	204.6	28,700	90
175	40	100	64.8	203.3	33,100	66.5	202.2	33,700	68.1	200.0	28,700	100
175	40	110	61.9	198.1	28,800	63.5	196.9	29,300	65.0	194.7	27,700	110
175	40	120	58.8	192.1	25,600	60.5	191.0	26,100	61.9	188.6	26,400	120
175	40	130	55.6	185.5	22,700	57.3	184.3	23,100	58.7	181.8	23,400	130
175	40	140	52.3	178.0	20,200	53.9	176.7	20,500	55.3	174.2	20,800	140
175	40	150	48.9	169.5	18,100	50.5	168.1	18,400	51.8	165.5	18,600	150
175	40	160	45.2	159.9	16,300	46.8	158.4	16,500	48.0	155.6	16,700	160
175	40	170	41.3	148.9	14,600	42.8	147.3	14,800				170
175	40	180	37.0	136.2	13,200	38.5	134.5	13,400				180
175	40	190	32.3	121.2	11,900							190
175	40	200	26.8	102.9	10,500							200