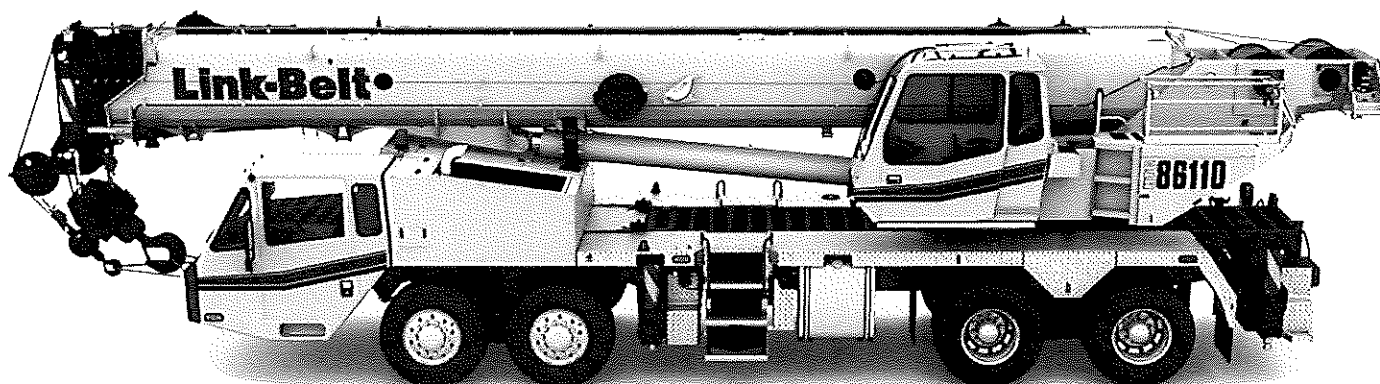


Technical Data

Specifications & Capacities

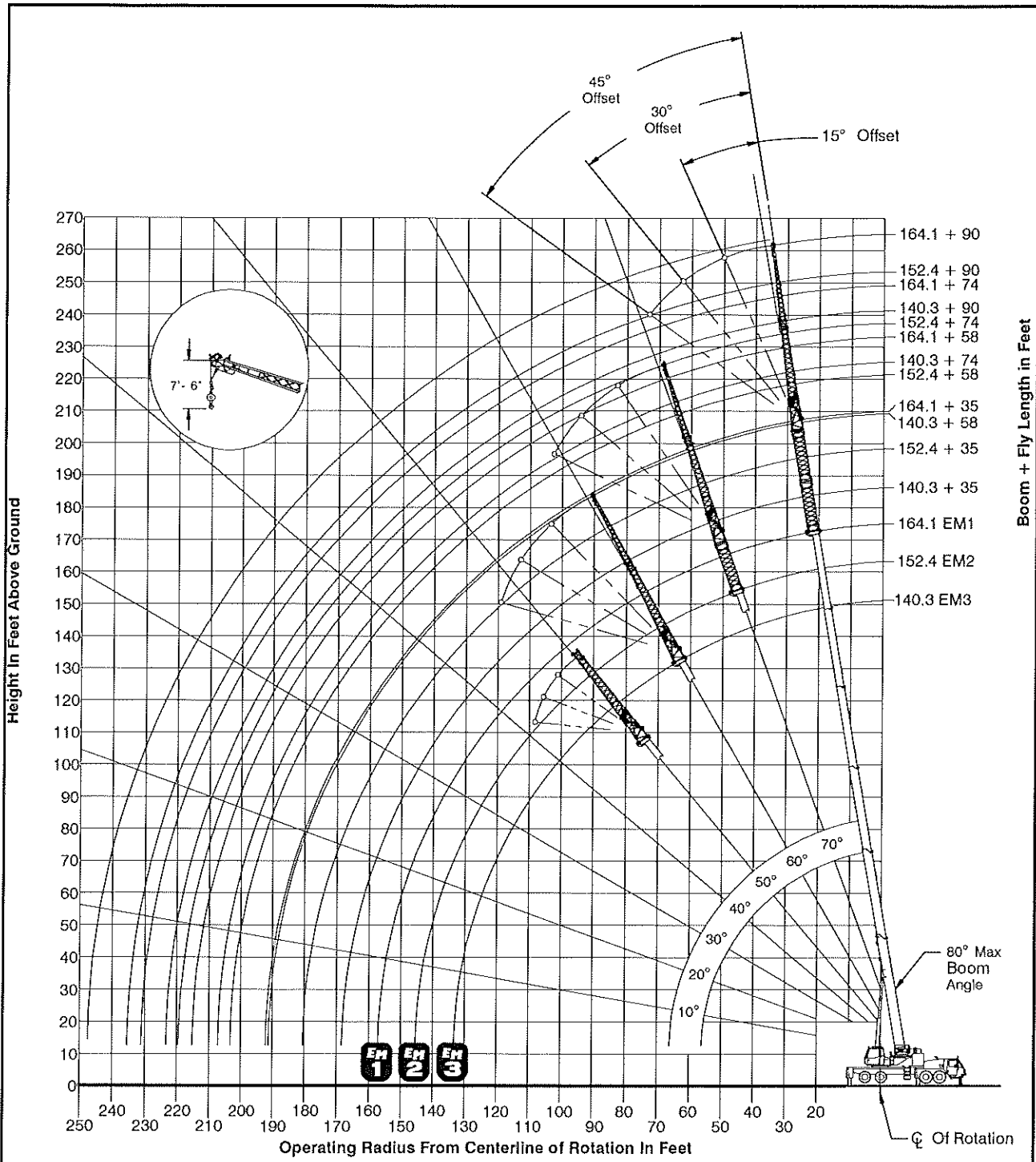
HTC 86110

Telescopic Boom Truck Crane
110 US ton
100 metric ton



CAUTION: This material is supplied for reference use only. Operator must refer to in- cab Crane Rating Manual and Operator's Manual to determine allowable crane lifting capacities and assembly and operating procedures.

Working Range Diagram - Main Boom + Attachments



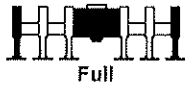
Note: Boom and fly geometry shown are for unloaded condition and crane standing level on firm supporting surface. Boom deflection, subsequent radius, and boom angle change must be accounted for when applying load to hook.

WARNING

Do Not Lower The Boom Below The Minimum Boom Angle For No Load Stability As Shown In The Lift Charts For The Boom Lengths Given. Loss Of Stability Will Occur Causing A Tipping Condition.

SN: T2K7-5505

Rated Lifting Capacities In Pounds



Radius (ft)	Boom Length (ft)						
	Extend Mode						
	126.3	137.2	140.0	140.3	150.0	152.4	164.1
	EM4	EM1	EM2	EM3	EM1	EM2	EM1
25	37,700	25,400					
30	37,700	25,400	28,300	30,800	22,500	24,400	
35	37,700	25,400	28,300	30,800	22,500	24,400	19,600
40	37,300	25,400	28,300	30,800	22,500	24,400	19,600
45	35,300	25,400	28,300	30,800	22,500	24,400	19,600
50	33,000	25,400	28,300	29,500	22,500	24,400	19,600
55	30,600	24,600	27,400	27,300	22,500	24,400	19,600
60	27,200	22,900	25,600	25,200	22,500	23,700	19,600
65	23,900	21,400	24,000	23,200	22,500	22,100	19,600
70	21,100	20,000	21,500	20,500	21,400	20,600	19,600
75	18,800	18,700	19,200	18,200	19,800	18,600	18,900
80	16,800	17,600	17,200	16,200	17,800	16,600	17,200
85	15,200	16,500	15,500	14,600	16,100	15,100	15,600
90	13,600	15,300	14,000	13,100	14,700	13,500	14,100
95	12,300	13,900	12,700	11,700	13,300	12,200	12,800
100	11,000	12,700	11,500	10,500	12,100	11,000	11,600
105	10,000	11,600	10,400	9,400	11,000	9,900	10,500
110	9,000	10,600	9,400	8,500	10,100	9,000	9,500
115	8,100	9,700	8,500	7,600	9,200	8,100	8,600
120		8,900	7,700	6,800	8,400	7,300	7,800
125		8,200	7,000	6,100	7,600	6,600	7,100
130		6,500	6,300	5,400	6,900	5,900	6,400
135					6,300	5,300	5,800
140					5,800	4,700	5,200
145						3,700	4,700
150							4,200
155							3,800
Unpinned							
Min Angle	0.0	0.0	0.0	0.0	0.0	0.0	0.0
Max Rad.	119.3	130.2	133.0	133.3	143.0	145.4	157.1
Capacity	3,600	4,100	2,600	1,600	2,400	1,100	800

1110070

SN: T2K7-5505