



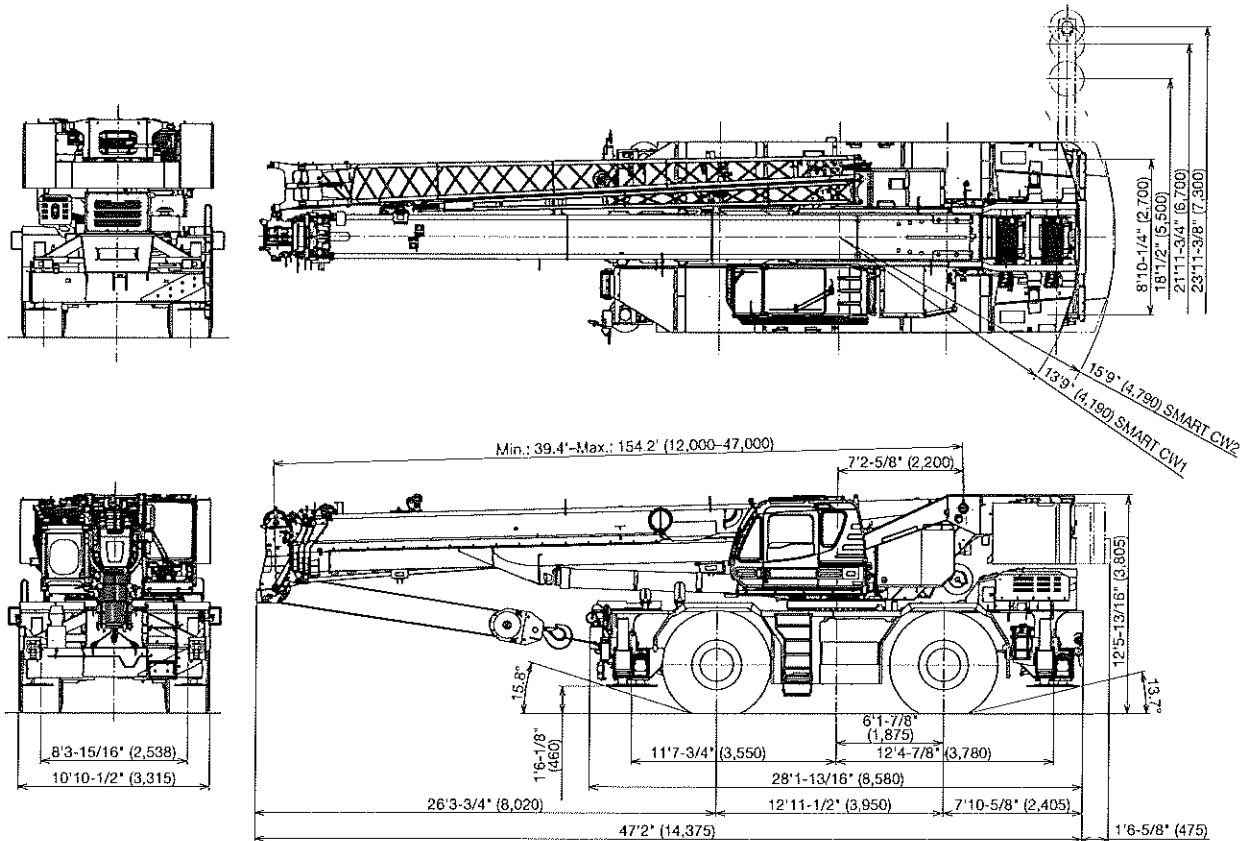
GR-1000XL-4

100 Ton (90.7 Metric Ton) Capacity

Form NO. GR-1000-4-00101/US-03

HYDRAULIC ROUGH TERRAIN CRANE

DIMENSIONS



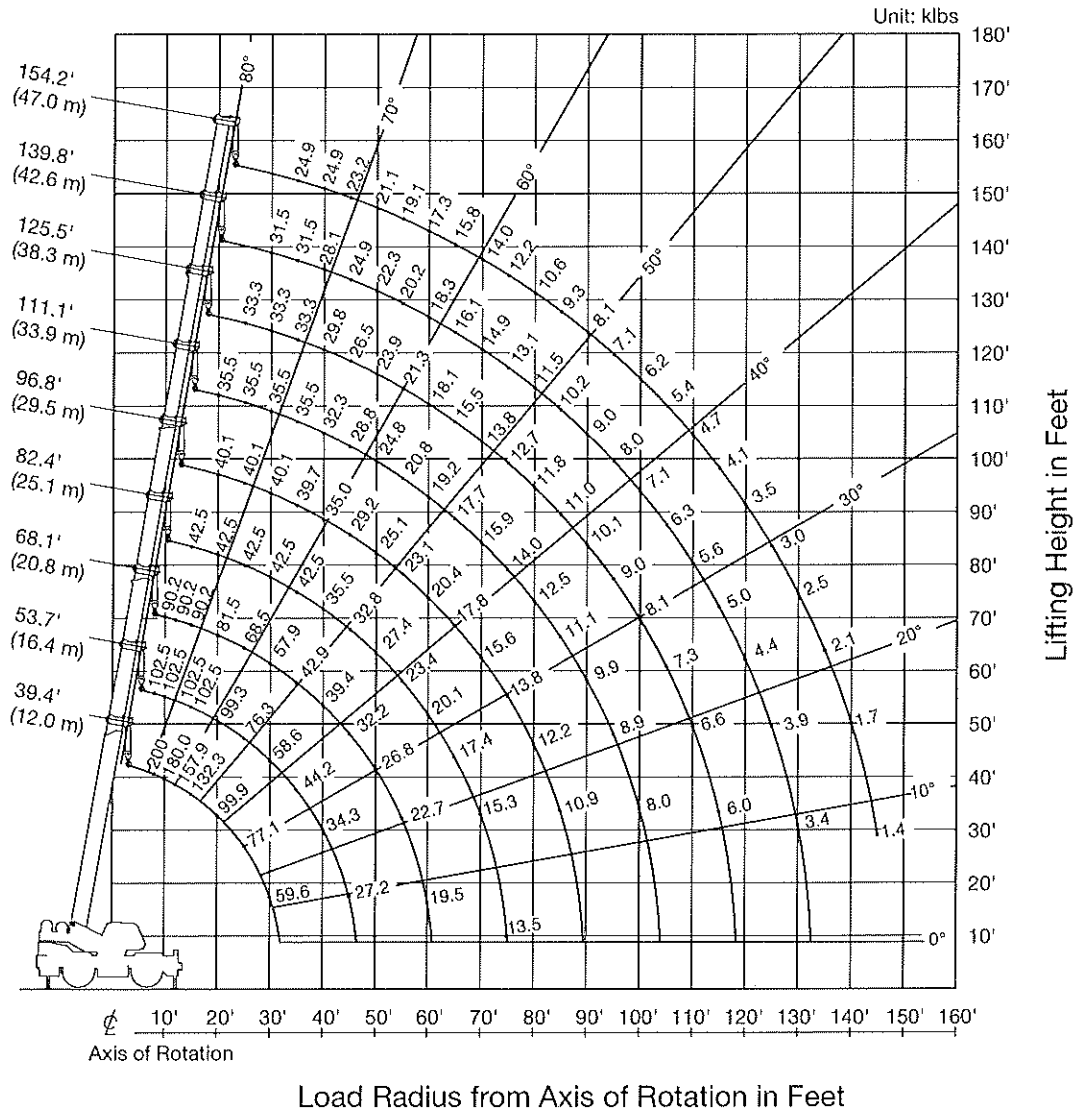
Note: Dimension is with boom angle at -1.5 degree.
() Reference dimensions in mm.

GENERAL DIMENSIONS

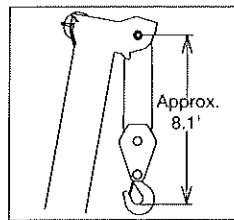
	Feet	Meters		Feet	Meters
Turning radius (29.5-25 Tires)			Overall length	approx. 47' 2"	14.375
4 wheel steer	22' 4"	6.8	Overall width	approx. 10' 10-1/2"	3.315
2 wheel steer	35' 9-3/32"	10.9	Overall height	approx. 12' 5-13/16"	3.805

GR-1000XL-4 WORKING RANGE CHART

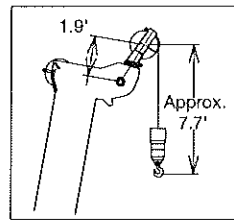
SMART CW1
360° ROTATION



BOOM



SINGLE TOP



NOTE: Boom geometry shown is for unloaded condition and machine standing level on firm supporting surface. Boom deflection and subsequent radius and boom angle change must be accounted for when applying load to hook. When boom length is same as telescoping mode 1 and 2, it show large load.

GR-1000XL-4 RATED LIFTING CAPACITIES (IN POUNDS)

COUNTERWEIGHT 20,100 lbs (9.1 t) ON OUTRIGGERS FULLY EXTENDED 23' 11-3/8" (7.3 m) SPREAD 360° ROTATION SMART CW2																	
B \ A	39.4'	53.7'	68.1'		82.4'		96.8'		111.1'		125.5'		139.8'		154.2'		
	(12 m)	(16.4 m)	(20.8 m)		(25.1 m)		(29.5 m)		(33.9 m)		(38.3 m)		(42.6 m)		(47 m)		
8	200,000	102,500															
10	181,900	102,500	90,200	40,100													
12	159,700	102,500	90,200	40,100													
15	133,800	102,500	90,200	40,100	42,500	35,500											
20	101,500	100,800	81,500	40,100	42,500	35,500	40,100	33,300	35,500	32,200							
25	78,300	77,600	68,500	40,100	42,500	35,500	40,100	33,300	35,500	32,200	33,300	32,200					
30	60,800	59,900	58,700	40,100	42,500	35,500	40,100	33,300	35,500	32,200	33,300	28,800	31,500	28,900			
35		45,700	44,400	40,100	42,500	35,500	39,700	33,300	35,500	30,800	33,300	25,500	31,500	27,200	24,900		
40		35,500	34,400	40,100	36,400	35,500	35,000	30,500	32,300	27,600	29,800	22,800	28,100	24,500	24,900		
45		28,300	27,300	33,200	29,200	33,800	30,200	27,600	28,800	24,900	26,500	20,700	24,900	22,200	23,200		
50			22,100	27,700	23,900	28,400	24,900	25,100	25,700	22,700	23,900	18,800	22,300	20,300	21,100		
55			18,100	23,500	19,900	24,200	20,900	23,100	21,600	20,800	21,600	17,300	20,200	18,700	19,100		
60			15,000	20,200	16,600	20,800	17,600	21,200	18,300	19,200	18,800	15,900	18,300	17,300	17,300		
65					14,000	18,100	15,000	18,500	15,700	17,700	16,100	14,800	16,500	16,100	15,800		
70					11,800	15,900	12,800	16,200	13,500	16,400	14,000	13,800	14,300	15,000	14,400		
75					10,100	14,100	11,000	14,400	11,700	14,600	12,100	12,700	12,500	13,600	12,700		
80							9,400	12,700	10,100	13,000	10,500	11,800	10,900	12,000	11,100		
85							8,100	11,400	8,700	11,600	9,200	11,000	9,500	10,600	9,800		
90									7,600	10,400	8,000	10,300	8,300	9,500	8,600		
95									6,500	9,300	7,000	9,500	7,300	8,400	7,500		
100									5,600	8,400	6,100	8,500	6,400	7,500	6,600		
105											5,300	7,700	5,600	6,700	5,800		
110											4,500	7,000	4,900	6,000	5,100		
115											3,900	6,300	4,200	5,300	4,500		
120													3,600	4,700	3,900		
125													3,100	4,200	3,300		
130													2,700	3,700	2,800		
135															2,400		
140															2,000		
145															1,700		
D	0°														10°	0°	11°
Telescoping mode	1, 2	1	1	2	1	2	1	2	1	2	1	2	1	2	1, 2		
2nd Boom	0	50	100	0	100	0	100	0	100	0	100	0	100	50	100		
3rd Boom	0	0	0	33	16	50	33	67	50	83	67	100	83	100	100		
4th Boom	0	0	0	33	16	50	33	67	50	83	67	100	83	100	100		
Top Boom	0	0	0	33	16	50	33	67	50	83	67	100	83	100	100		

COUNTERWEIGHT 20,100 lbs (9.1 t) ON OUTRIGGERS FULLY EXTENDED 23' 11-3/8" (7.3 m) SPREAD 360° ROTATION SMART CW2																											
C \ A	39.4'	53.7'	68.1'		82.4'		96.8'		111.1'		125.5'		139.8'		154.2'												
	(12 m)	(16.4 m)	(20.8 m)		(25.1 m)		(29.5 m)		(33.9 m)		(38.3 m)		(42.6 m)		(47 m)												
0°	32.4	24,100	48.7	13,800	60.9	7,900	60.8	12,900	75.1	7,600	74.9	14,100	89.2	3,500	68.9	6,900	103.5	2,200	102.9	5,700	117.6	1,500	116.9	4,600		131.3	2,500
Telescoping mode	1, 2	1	1	2	1	2	1	2	1	2	1	2	1	2	2											2	

- A: Boom length in feet
- B: Load radius in feet
- C: Loaded boom angle (°)
- D: Minimum boom angle (°) for indicated length (no load)

NOTE: The lifting capacity data stored in the LOAD MOMENT INDICATOR (AML-E2) is based on the standard number of parts of line listed in the chart. Standard number of parts of line for each boom length should be according to the following table.

Boom length in feet (meters)	39.4' (12 m)	39.4' to 68.1' (12 m to 20.8 m)	68.1' to 154.2' (20.8 m to 47 m)	Single top jib
Telescoping mode	1, 2	1	2	1, 2
Number of parts of line	16	8	4	4