



T 780
80 US^t Lifting Capacity
Truck Crane
Datasheet
Imperial



T 780

Features: T 780

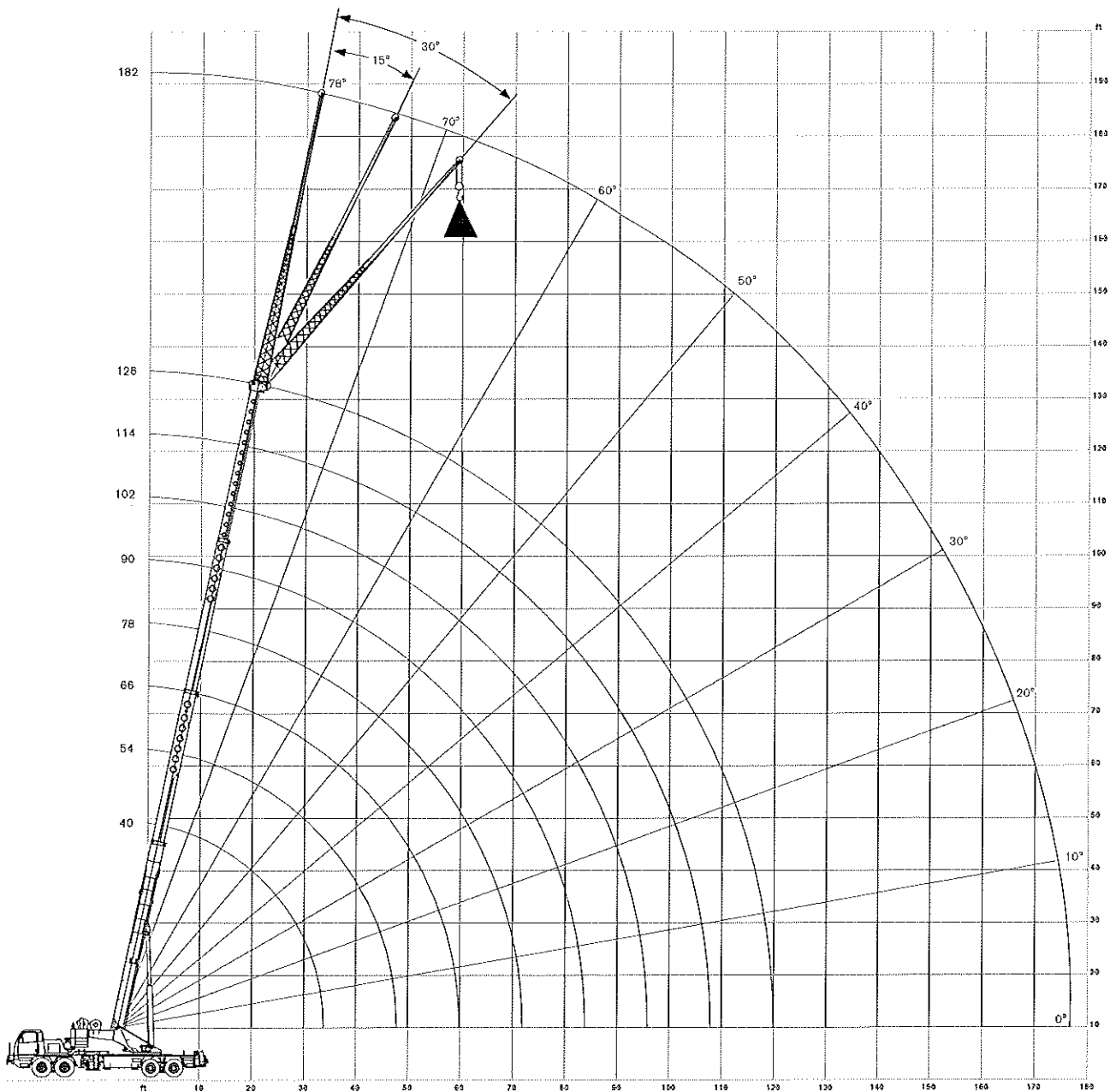
- ▶ 80 US^t maximum lifting capacity
- ▶ 126 ft maximum boom length
- ▶ 133 ft maximum tip height
- ▶ Engine configurations up to 500 hp
- ▶ Automatic and manual transmission options
- ▶ Air-ride suspension
- ▶ Travel speeds up to 65 mph

WORKS FOR YOU.™

RANGE DIAGRAM - MAIN BOOM

T 780


Outriggers Fully Extended (100%)

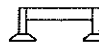


LOAD CHART - MAIN BOOM


T 780

Outriggers Fully Extended (100%)

 15,000 lb

 100%

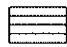
 360°

 40-126 ft


Standard ASME
B30.5


		Boom Length (ft)									
		40	54	66	78	90	102	114	126		
ft	lb	lb	lb	lb	lb	lb	lb	lb	lb	ft	
10	160,000	102,500								10	
12	125,600	102,500								12	
15	108,900	100,500								15	
20	83,800	84,800	80,600							20	
25	65,500	66,500	64,800	62,200	56,200					25	
30	52,200	53,600	54,000	49,700	41,700	41,900				30	
35		40,900	41,500	41,700	36,600	32,100	31,500			35	
40		32,500	33,100	33,400	32,900	28,600	26,200	24,700		40	
45		26,400	27,100	27,400	27,400	25,700	23,500	22,100		45	
50			22,500	22,900	23,100	23,300	21,400	20,000		50	
55			19,000	19,400	19,700	19,800	19,500	18,200		55	
60				16,600	16,800	17,000	17,100	16,600		60	
65				14,200	14,500	14,700	14,800	14,900		65	
70				12,300	12,600	12,800	12,900	13,000		70	
75					11,000	11,100	11,300	11,400		75	
80					9,500	9,800	9,900	10,000		80	
85						8,500	8,700	8,800		85	
90						7,500	7,700	7,700		90	
95						6,500	6,700	6,800		95	
100							5,800	6,000		100	
105							5,000	5,200		105	
110								4,500		110	
115								3,900		115	

Outriggers Fully Extended (100%)

 15,000 lb

 100%

 Over Rear

 40-126 ft

Standard ASME
B30.5

		Boom Length (ft)									
		40	54	66	78	90	102	114	126		
ft	lb	lb	lb	lb	lb	lb	lb	lb	lb	ft	
10	160,000	102,500								10	
12	125,600	102,500								12	
15	108,900	100,500								15	
20	84,500	85,300	80,600							20	
25	65,500	66,500	64,800	62,200	56,200					25	
30	52,200	53,600	54,000	49,700	41,700	41,900				30	
35		40,900	41,500	41,700	36,600	32,100	31,500			35	
40		32,500	33,100	33,400	32,900	28,600	26,200	24,700		40	
45		26,400	27,100	27,400	27,400	25,700	23,500	22,100		45	
50			22,500	22,900	23,100	23,300	21,400	20,000		50	
55			19,000	19,400	19,700	19,800	19,500	18,200		55	
60				16,600	16,800	17,000	17,100	16,600		60	
65				14,200	14,500	14,700	14,800	14,900		65	
70				12,300	12,600	12,800	12,900	13,000		70	
75					11,000	11,100	11,300	11,400		75	
80					9,500	9,800	9,900	10,000		80	
85						8,500	8,700	8,800		85	
90						7,500	7,700	7,700		90	
95						6,500	6,700	6,800		95	
100							5,800	6,000		100	
105							5,100	5,200		105	
110								4,600		110	
115								3,900		115	

Notes to lifting capacity

Lifting capacities do not exceed 85% of tipping load. Weight of hook blocks and slings is part of the load, and is to be deducted from the capacity ratings. Consult operation manual for further details.

Note: Data published herein is intended as a guide only and shall not be construed to warrant applicability for lifting purposes. Crane operation is subject to the computer charts and operation manual both supplied with the crane.

