



T 560-1
60 USt Lifting Capacity
Truck Crane
Datasheet
Imperial

T 560-1



Features: T 560-1

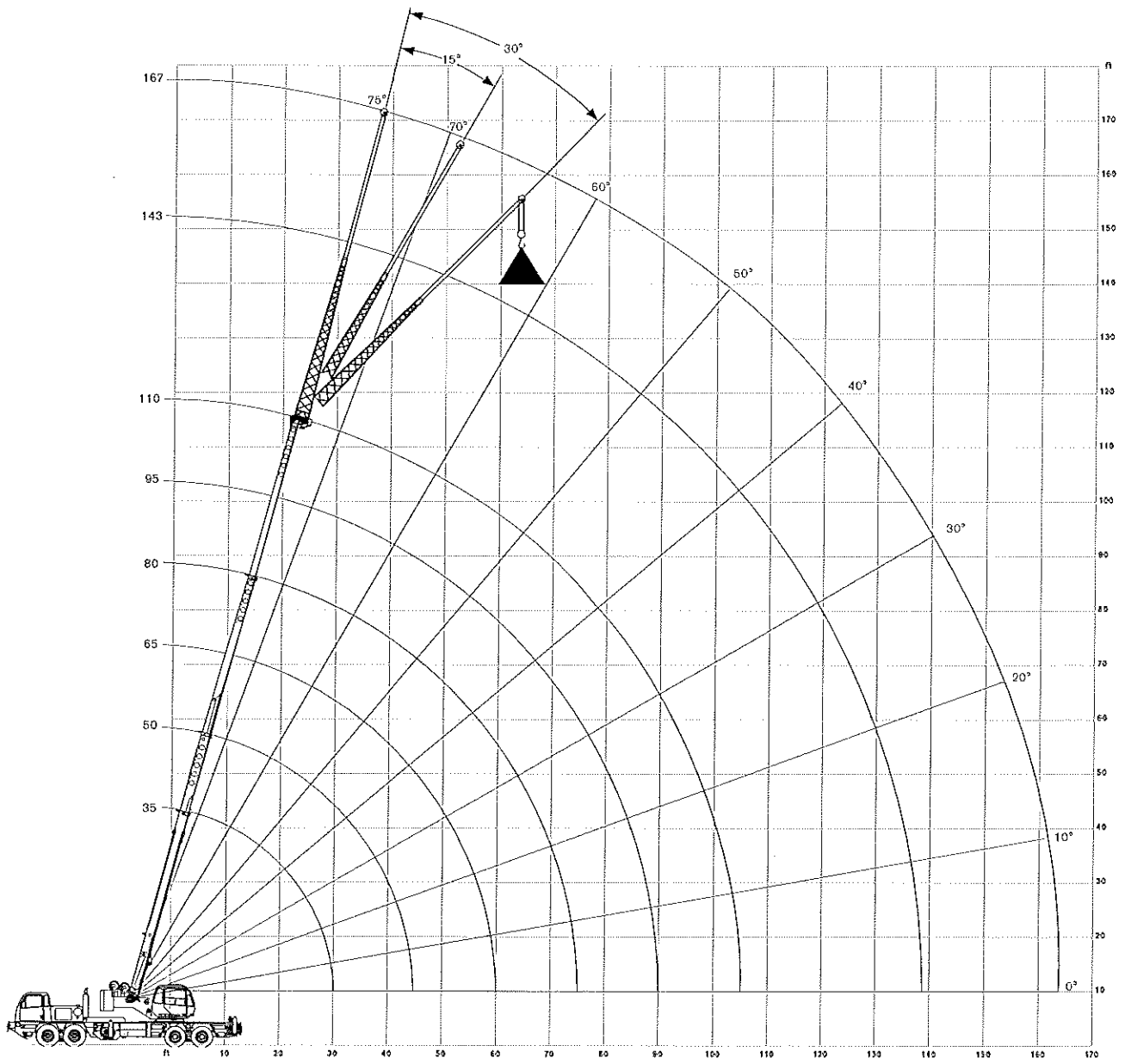
- ▶ 60 USt maximum lifting capacity
- ▶ 110 ft maximum boom length
- ▶ 170 ft maximum tip height
- ▶ Engine configurations up to 430 hp
- ▶ Automatic and manual transmission options
- ▶ Air-ride suspension
- ▶ Travel speeds up to 65 mph

WORKS FOR YOU.™

RANGE DIAGRAM - MAIN BOOM

T 560-1

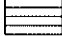
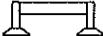


Outriggers Fully Extended (100%)



LOAD CHART - MAIN BOOM

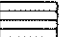



T 560-1

Outriggers Fully Extended (100%)

 16,500 lb
  100%
  360°
  35-110 ft
 Standard ASME B30.5

		Boom Length (ft)							
		35	50	65	80	95	110		
ft	lb	lb	lb	lb	lb	lb	lb	ft	
10	120,000	80,000						10	
12	100,700	80,000						12	
15	82,800	78,400		61,900				15	
20	62,500	63,300		54,800	46,200			20	
25	48,300	49,600		49,100	40,700			25	
30	36,700	38,600		39,100	36,000	35,300		30	
35		29,100		29,700	30,000	28,000	27,500	35	
40		22,700		23,400	23,800	24,000	22,500	40	
45		18,100		19,000	19,300	19,500	19,600	45	
50				15,600	16,000	16,200	16,300	50	
55				12,900	13,400	13,600	13,700	55	
60				10,700	11,300	11,500	11,700	60	
65					9,600	9,800	10,000	65	
70					8,100	8,400	8,600	70	
75					6,800	7,200	7,400	75	
80						6,200	6,400	80	
85						5,200	5,500	85	
90						4,400	4,700	90	
95							4,000	95	
100							3,300	100	
105							2,700	105	

Outriggers Fully Extended (100%)

 16,500 lb
  100%
  Over Rear
  35-110 ft
 Standard ASME B30.5

		Boom Length (ft)							
		35	50	65	80	95	110		
ft	lb	lb	lb	lb	lb	lb	lb	ft	
10	120,000	80,000						10	
12	107,000	80,000						12	
15	87,100	78,400		61,900				15	
20	62,900	63,300		54,800	46,200			20	
25	48,300	49,600		49,100	40,700			25	
30	36,800	39,900		40,500	36,000	35,300		30	
35		32,800		33,500	32,200	28,000	27,500	35	
40		27,500		28,300	28,700	25,200	24,800	40	
45		22,200		24,200	24,600	23,100	22,500	45	
50				20,800	21,300	21,300	20,600	50	
55				17,900	18,400	18,600	18,800	55	
60				14,700	15,800	16,000	17,400	60	
65					13,600	16,000	16,200	65	
70					11,900	13,900	14,100	70	
75					10,300	12,200	12,300	75	
80						10,700	10,900	80	
85						9,400	9,600	85	
90						8,200	8,500	90	
95						7,200	7,500	95	
100							6,600	100	
105							5,800	105	

Notes to lifting capacity

Lifting capacities do not exceed 85% of tipping load. Weight of hook blocks and slings is part of the load, and is to be deducted from the capacity ratings. Consult operation manual for further details.

Note: Data published herein is intended as a guide only and shall not be construed to warrant applicability for lifting purposes. Crane operation is subject to the computer charts and operation manual both supplied with the crane.